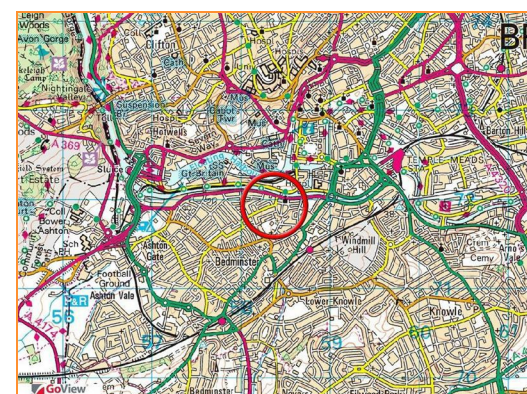
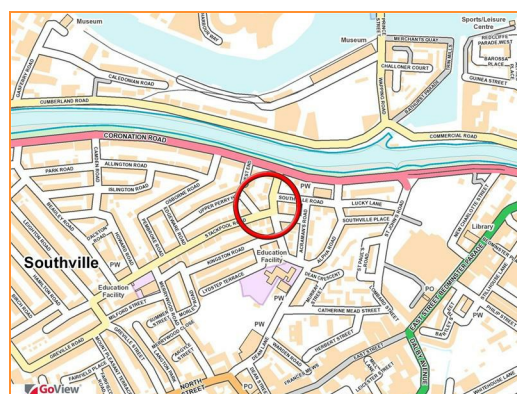




**4 Stackpool Road, Southville, Bristol, BS3 1NQ**

**Sold @ Auction £340,000**

Hollis Morgan SEPTEMBER AUCTION - A Freehold semi detached PERIOD PROPERTY ( 1507 Sq Ft ) now in need of COMPLETE MODERNISATION.



# 4 Stackpool Road, Southville, Bristol, BS3 1NQ

## FOR SALE BY AUCTION

\*\*\* SOLD @ AUCTION \*\*\*

GUIDE PRICE £200,000 +++  
SOLD @ £340,000

LOT NUMBER 46

Wednesday 27th September 2017

All Saints Church Pembroke Road, Clifton, Bristol BS8 2HY

Legal packs will be available for inspection from 18:00.

The sale will begin promptly at 19:00

## PRE AUCTION OFFERS

On this occasion NO OFFERS will be considered prior to the auction.

## SOLICITORS

Sue Rzeznicki

Gregg Latchams

DDI: +44 (0)117 9069 432

Fax: +44 (0)117 9069 401

sue.rzeznicki@gregglatchams.com

## ONLINE LEGAL PACKS

Digital Copies of the Online legal pack can be downloaded Free of Charge.

Please visit the Hollis Morgan Website and select the chosen lot from our Current Auction List.

Follow the RED link to "Download Legal Packs" For the first visit you will be required to register simply with your email and a password.

Having set up your account you can download legal packs or if they are not yet available they will automatically be sent to you when we receive them.

You will be automatically updated by email if any new information is added.

\*\*\* STAY UPDATED \*\*\* By registering for the legal pack we can ensure you are kept updated on any changes to this Lot in the build up to the sale.

## THE PROPERTY

A semi detached Freehold period property ( 1507 Sq Ft ) arranged over two floors with enclosed courtyard garden and off street parking.

## GROUND FLOOR

Entrance Hall

Reception 1

Reception 2

Kitchen

Utility

## FIRST FLOOR

Bedroom 1

Bedroom 2

Bedroom 3

Study

Bathroom

## OUTSIDE

Off Street Parking

Courtyard Garden

## LOCATION

Stackpool Road lies within the popular suburb of Southville. The vibrant North Street is within walking distance and offers a wide variety of amenities including bars, pubs, cafes and independent retailers. Bristol City Centre and the Harbourside district are within a mile whilst there are also regular public transport links running from Bedminster to the Cabot Circus shopping complex which is approximately two miles away.

## THE OPPORTUNITY

REQUIRES MODERNISATION

The property now requires modernisation but would make a fine family home in this sought after location.

## ATTIC CONVERSION

There is scope for attic conversion ( Subject to consents )

## FLAT CONVERSION

Scope for Flat conversion ( Subject to consents )

## HMO / STUDENT LET

Potential for 4 + Tenants.

## RENTAL APPRAISAL

What rent can we achieve for you?

The Bristol Residential Letting Co. are confident this property would make a good rental investment. Josh Box of The Bristol Residential Letting Co suggests a rent in the region of:

4 Bedroom House - £1600 - £1700pcm

If you would like to discuss more detail on the potential for rental, you can call me (0117 370 8818) or email (josh@bristolreslet.com) for a no obligation discussion. Alternatively why not drop into my Office (222 North Street, Southville, BS3 1JD) where I am always happy to advise investors on maximising their investment.

## GUIDE PRICE

An indication of the seller's current minimum acceptable price at auction. The guide price or range of guide prices is given to assist consumers in deciding whether or not to pursue a purchase. It is usual, but not always the case, that a provisional reserve range is agreed between the seller and the auctioneer at the start of marketing. As the reserve is not fixed at this stage and can be adjusted by the seller at any time up to the day of the auction in the light of interest shown during the marketing period, a guide price is issued. This guide price can be shown in the form of a minimum and maximum price range within which an acceptable sale price (reserve) would fall, or as a single price figure within 10% of which the minimum acceptable price (reserve) would fall. A guide price is different to a reserve price (see separate definition). Both the guide price and the reserve price can be subject to change up to and including the day of the auction.

## RESERVE PRICE

The seller's minimum acceptable price at auction and the figure below which the auctioneer cannot sell. The reserve price is not disclosed and remains confidential between the seller and the auctioneer. Both the guide price and the reserve price can be subject to change up to and including the day of the auction.

## BUYER'S PREMIUM

Please be aware all purchasers are subject to a £750 + VAT (£900 inc VAT) buyer's premium which is ALWAYS payable upon exchange of contracts whether the sale is concluded before, during or after the auction date.

## EPC

For full details of the EPC please refer to the online legal pack.

## AUCTION FINANCE

Some properties may require specialist auction finance- please contact Hollis Morgan for access to expert advice and "whole of market" rates.

## AUCTION BUYERS GUIDE VIDEO

We have short video guides for both buying and selling by Public Auction on the Hollis Morgan Website. If you have any further questions regarding the process please don't hesitate to contact Auction HQ.

## TELEPHONE AND PROXY BIDDING

If you cannot attend the auction (although we strongly advise you do) you can make a TELEPHONE or PROXY BID. This authorises the auctioneer to bid on your behalf up to a pre-set limit. Forms and relevant conditions are available to download with the online legal pack. A completed form, ID and two cheques (one for the 10% deposit and one for the Buyer's Administration Fee of £900) are required by the Auction Department at least two full working days before the auction.

## SURVEYS AND VALUATIONS

If you would like to arrange a survey or mortgage valuation of this Lot BEFORE the auction please instruct your appointed surveyor to contact Hollis Morgan and we will arrange access for them to inspect the property. Please note that buyers CANNOT attend the surveys and the surveyors are responsible for collecting and returning keys to the Hollis Morgan offices in Clifton.

## BIDDING AT THE AUCTION

This property is for sale by public auction and if you intend to bid please bring the following: Proof of identity (valid passport or photo driving licence). Proof of address (bank statement, recent utility bill, council tax bill or tenancy agreement). 10% deposit payment. Buyers premium payment. Details of your solicitor.

## PAYING THE DEPOSIT & BUYERS PREMIUM

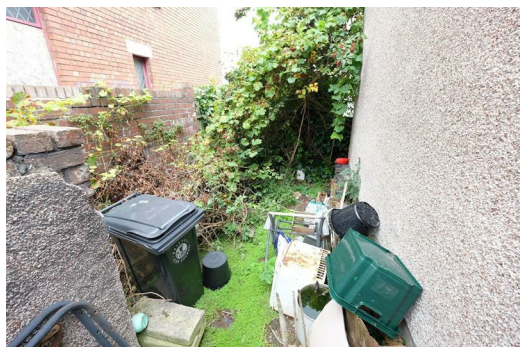
We can only accept the following at the auction: Personal or Company Cheque Bankers Draft Debit Card ( NOT CREDIT CARD )

## CHARITY OF THE YEAR

Hollis Morgan are supporting Bristol based " Life for a Cure" as our 2017 Charity of the year which aims 'a LIFE for a CURE', to raise funds in support of finding the 'Ultimate Vaccine' for Meningitis B. We are delighted to announce that 5 % of every buyer's premium will be donated to 'a Life for a Cure' which was founded as both a legacy to Ryan and to help raise awareness and valuable funds in search of the ultimate vaccine. This Bristol charity run purely on a voluntary basis is simply about working together to stop other amazing young lives being lost to meningitis. - to learn more about Ryans Story and this fantastic cause please visit there website. [www.ryanbresnahan.org/](http://www.ryanbresnahan.org/) In 2016 we raised £4,000 for Bristol based housing charity "Home Start" to learn more visit the charity section of our website - [www.hollismorgan.co.uk/charity/](http://www.hollismorgan.co.uk/charity/)

## TESTIMONIALS

We are very proud of what our past clients have say about us - please visit the Hollis Morgan website to read their testimonials.



e-mail: [post@hollismorgan.co.uk](mailto:post@hollismorgan.co.uk) [www.hollismorgan.co.uk](http://www.hollismorgan.co.uk)

9 Waterloo Street, Clifton, Bristol BS8 4BT. Telephone: 0117 973 65 65

Hollis Morgan Property Limited, registered in England, registered 7275716. Registered address, 5 Upper Belgrave Road, Clifton, Bristol BS8 2XQ